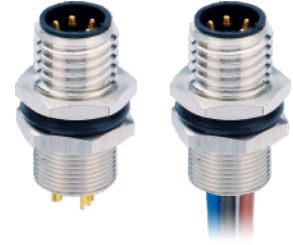
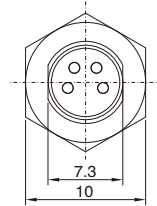
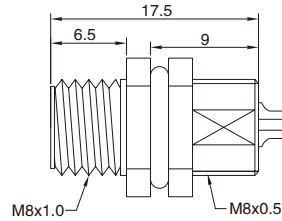


## M8 Male Panel Mount, Solder, Rear fastened

- Connector series: M8
- Gender: Male
- Coding: A,B
- Locking type: Fix screw
- Mounting type: Rear fastened
- Part No.: MB08MS\*RF\*\*ST

\* refers to coding type  
\*\* refers to pins number



### General information

Standard:	IEC 61076-2-104
Ambient temperature:	-25 °C ~ +90 °C
Connector insert:	TPU
Connector contacts:	Brass with gold plated
Connector nut/screw:	Brass with nickel plated
Seal / O-ring:	Epoxy resin / FKM

Insulation resistance:	≥ 100MΩ
Contact resistance:	≤ 5mΩ
Shielding:	Unavailable
IP rating:	IP67 in locked condition
Panel cut-out:	Refer to page 62
Mating endurance:	>500 cycles

### Electrical data & Mechanical data

Contacts	Contacts termination	Rated current	Voltage		Wire gauge / size		Wire insulation	Part No.
			A/C	D/C	AWG	mm <sup>2</sup>		
03 pins  (A-coding)	Solder version	3A	50V	60V	24AWG	0.25	PVC wire or customized	MB08MSARF03ST
04 pins  (A-coding)	Solder version	3A	50V	60V	24AWG	0.25	PVC wire or customized	MB08MSARF04ST
05 pins  (B-coding)	Solder version	3A	30V	30V	24AWG	0.25	PVC wire or customized	MB08MSBRF05ST
06 pins  (A-coding)	Solder version	1.5A	30V	30V	26AWG	0.14	PVC wire or customized	MB08MSARF06ST
08 pins  (A-coding)	Solder version	1.5A	30V	30V	26AWG	0.14	PVC wire or customized	MB08MSARF08ST

### Remarks

- Please refer to Page 578 for the Conversion between American Wire Gauge AWG and Wire Cross-section mm<sup>2</sup>.
- Please refer to Page 22 for products' part number encoding rule.